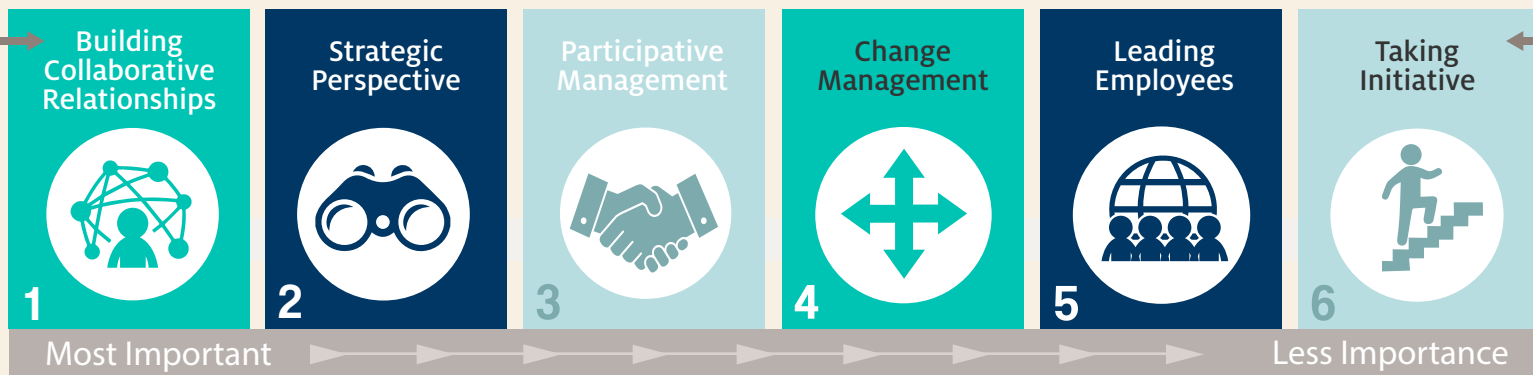




# Leadership Bench: **Healthcare**

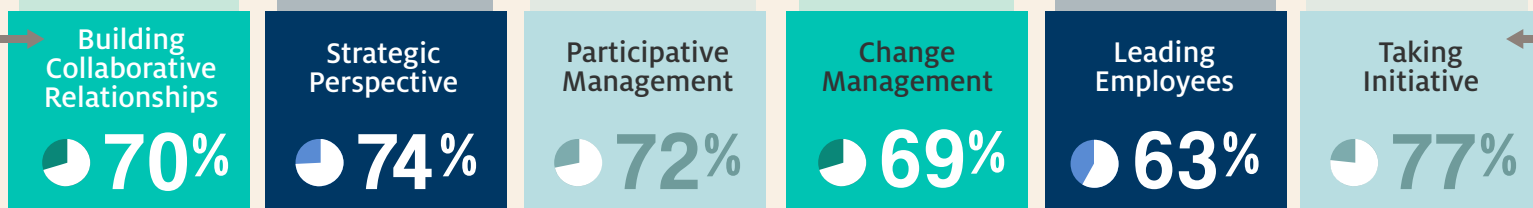
## How prepared are **leaders for success** according to their bosses?

### The 6 Most Important Leader Competencies



## Today's leaders are **not prepared**

### Percentage of leaders who were rated 'at least proficient' by their bosses



#DataDrivenLeadership

### Leaders must focus their energy on



### Leaders must use

## Informal Influence Behaviors

rather than

## Positional / Hierarchical Power

### Strong Professional Networks (and personal too)

which can *critically improve* a leader's ability to *build collaborative relationships*

### Research



Our findings are based on a 2013-2016 sample of 2,177 U.S. leaders in the Healthcare industry (47% men). Leaders' bosses provided the importance and proficiency ratings.